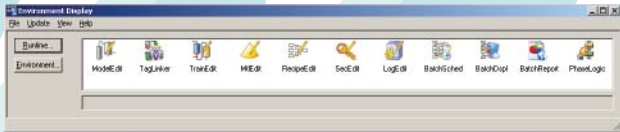


Wonderware InBatch 9.0 Software

Improve Flexible Batch Process

Wonderware® InBatch® software provides a powerful solution for effectively managing flexible batching processes found in various industries. Consistent with the ISA S88 industry standard, InBatch software offers comprehensive batch execution, equipment allocation, material genealogy, stringent security and web-based reporting capabilities.



Wonderware InBatch software helps process manufacturers:

Reduce Manufacturing Costs through built-in material management capabilities that enable accurate recordkeeping of material consumptions, movements and inventory levels.

Achieve Faster Time-to-Market and Enhanced Productivity through the central definition of equipment, independent master-recipes and consistent execution of batch processes and production sequences, including automatic, semi-automatic and manual phases.

Increase Product Quality by enforcing recipe procedures and verification that operators execute activities in the proper sequence.

Improve Compliance and Governance through complete electronic system records for 'as planned' and 'as executed' information, including full Electronic Batch Records (EBR) in accordance with requirements found in FDA 21 CFR Part 11 regulations.

Reduce Lifecycle Engineering Costs through a powerful process model that enables users to create modular and reusable unit procedures and phases with significantly reduced control code logic, as well unprecedented application reusability via tight integration to the Wonderware System Platform.

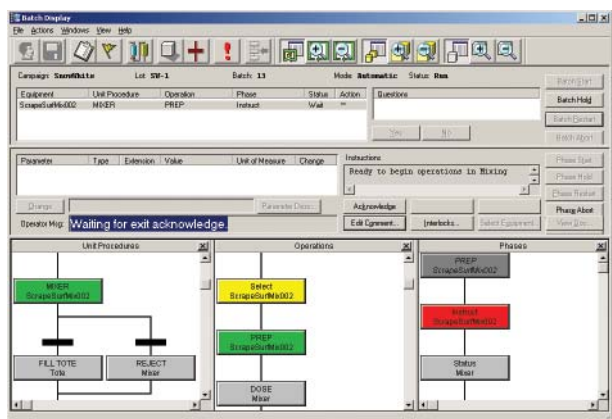
InBatch 9.0 software excels at automating the simplest to the most complex batching applications that demand flexibility. Leveraging the award-winning Archestra® technology, Wonderware System Platform and InTouch® HMI, InBatch software helps you achieve an unprecedented level of productivity by providing

enhanced batch application flexibility. Tangible benefits derived from using Wonderware InBatch 9.0 software include:

- Comprehensive batch execution and equipment history with full material genealogy
- Reconciliation of material inventory with actual quantities in vessels
- Use of material characteristics during the batch process, including the ability to dynamically adjust and apply formula parameters at runtime
- External phase and scripting engine, reducing the need to change control code and facilitating interaction with third-party databases and systems
- Generation of specific alarms associated with a specific batch
- Automated batch report creation; for example, at the end of each batch

CONSISTENT EXECUTION OF BATCH PROCESSES

Successful batch manufacturing is based on the reliable and consistent execution of recipes. InBatch software recipes are based on the ISA S88 Process Model by defining the plant's equipment and processing capabilities as well as its control and information requirements. Once defined, recipes can be easily created, scheduled and executed.



Using the comprehensive Material Model naturally integrated to the process model, the InBatch software's Batch Server is responsible for all aspects of batch management – including schedule dispatching, batch control, equipment arbitration, allocation and release, batch history, material consumption and production, and runtime client management.

InBatch software makes it easy for production workers to:

- Schedule, initialize and execute batches
- Manage recipes
- Track bulk materials
- Adhere to standard operating procedures
- Obtain consistent batch-to-batch product quality
- Report on planned vs. actual records for all steps and events for each individual batch

ENSURE FLEXIBILITY WITH THE ABILITY TO ADAPT

With InBatch software, every recipe can have a different procedure and formula, and recipes can be scheduled for production on any train ('paths' or collection of equipment that can be defined to be used on a per recipe / batch basis) that satisfies the equipment requirements defined in the recipe. Use InBatch software to configure the use of process equipment in generic master recipes, and to modify the formulation at runtime. This gives manufacturers the flexibility needed to successfully compete in today's competitive manufacturing environment.

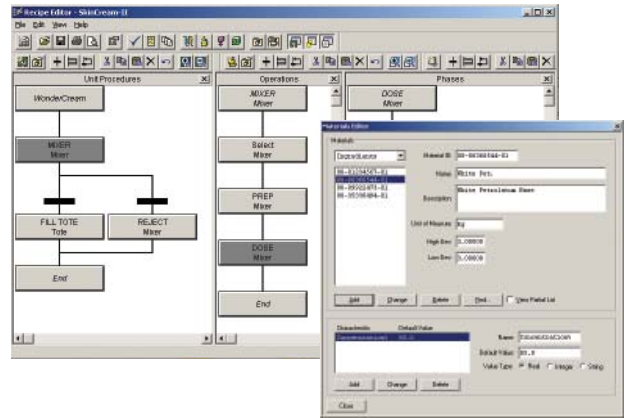
InBatch software helps make it easy for engineers to reduce the lifecycle engineering costs of a batch execution system by providing a system to:

- Model your plant
- Record batch, equipment and security history
- Define, schedule and view reports in a browser
- Facilitate 21 CFR Part 11 system design using InBatch software's security option
- Create reusable libraries of functional components, including external phase logic
- Create intuitive and compelling user interfaces
- Centralize deployment and system maintenance

GRAPHICAL RECIPE DEVELOPMENT REDUCES ENGINEERING EFFORT

The Recipe Editor provided by InBatch software utilizes a very intuitive approach to recipe development, giving production personnel the ability to graphically and easily develop and maintain recipes without costly engineering support. As a result, engineers can focus on true engineering issues. The Recipe Editor offers the following benefits:

- A graphical procedure environment featuring Sequential Function Charts (SFC)
- Reusable unit procedures and operations saved to libraries with drag-and-drop simplicity

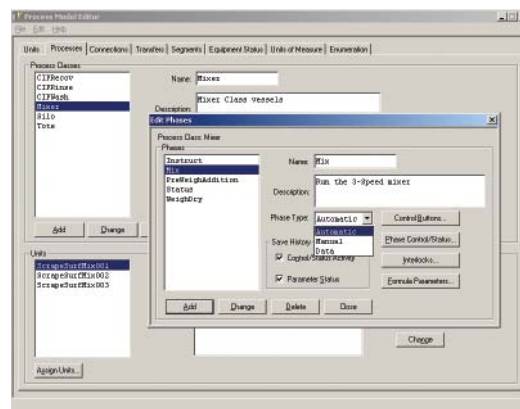


Recipes can be executed in simulation against the process model without being tied to a control system such as a PLC. As a result, InBatch software can help users:

- Address scaling issues
- Determine if a plant has the required equipment, processing capabilities and materials to produce the desired recipes
- Facilitate research and development
- Help Quality Assurance personnel verify various aspects of a particular recipe
- Validate the recipe, not the control system

SIMPLIFY AND REDUCE COSTLY CONTROL CODE

With InBatch software, the control/PLC code is created in a modular structured format, called Phases, to provide a specific task or function. This enables users to create standard control or PLC logic libraries, enabling reuse throughout the enterprise.



This approach gives you the ability to:

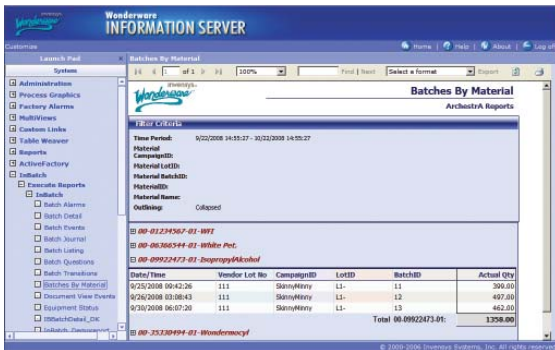
- Alter the sequence of operations and phases directly from the batch system
- Develop fewer elaborate sequences in controllers and PLCs

- Implement unit-to-unit material transfers and unit control
- Drastically reduce initial engineering efforts
- Extend system capabilities
- Reduce the amount of custom control code
- Decrease implementation and maintenance costs by up to 60%

BATCH INFORMATION MANAGEMENT AND REPORTING

Electronic batch records

InBatch software automatically captures and stores all data associated with processing events related to the management and execution of batches. This includes material genealogy, all batch events, phase events and equipment arbitration, including allocation and release, equipment status changes, operator actions and comments and any alarms associated with a particular batch. InBatch software also maintains a complete trail of all security system events.



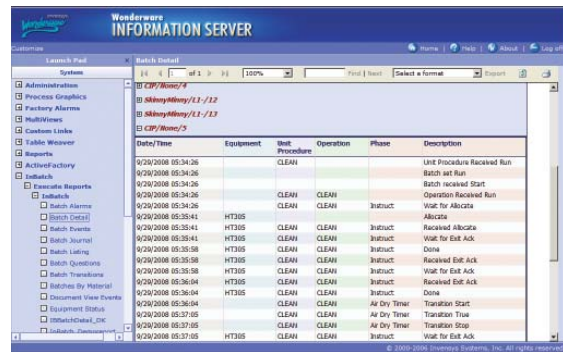
Powerful reporting

InBatch software offers a comprehensive set of Web-based production reports, leveraging the Wonderware Information Server. These reports can be customized to help users easily schedule, generate and view batch reports with a browser.

Available to anyone throughout the organization, this real-time, immediate access to accurate information from your batch processes helps enable:

Increased productivity – all of the appropriate personnel throughout the enterprise can access valuable operational information and thereby maximize productivity.

Elimination of paper records – since solutions built with InBatch can satisfy the requirements of 21 CFR Part 11, there is no need for maintaining a separate paper trail. All required records are captured and secured in a SQL Server database for future retrieval.

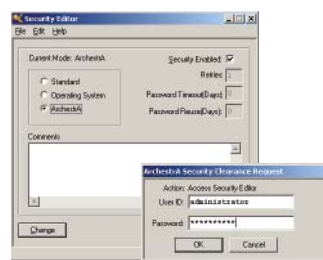


Reduced batch release cycles – the automatic capture of records and related reporting capabilities reduces the amount of time necessary to verify records and approve a batch for release. Batch reports can be scheduled to run automatically at end of each batch.

REGULATORY COMPLIANCE

InBatch software provides comprehensive capabilities to facilitate the design and implementation of systems, applications and solutions that comply with regulations such as FDA 21 CFR 11. InBatch software has played a critical role in the creation of many FDA-validated applications in industry today.

With InBatch software, the control code or PLC code can be written in a modular format to provide a specific task or function rather than as part of a fixed sequence of operations. As a result, InBatch software can help you direct and orchestrate the sequence of operations in the controller or PLC to suit particular recipes. Because the control system does not change, only the new recipe needs to be validated. The time and expense saved in validating only the new recipe is enormous.



Enforced batch sequencing – the operator is only able to execute the currently-active step. In addition, each step can have “done-by” and “check-by” security applied to ensure that the steps are performed in the order presented. The “done-by/check-by” security becomes an electronic signature in the batch record.

InBatch software's functionality offers security based on the Microsoft® Windows® authentication scheme, which inherits the enforcement of various account policies from the Windows operating system and provides features like Password Timeout, Password Reuse and limited re-tries to obtain security clearance.

SCALABLE SOFTWARE ARCHITECTURE

The tight integration of InBatch Software with the Wonderware System Platform facilitates the ability to write code once and then reuse it many times, saving a substantial amount of engineering time. Leveraging the underlying ArchestrA technology also provides the following benefits:

- Unlimited Tag/Object definitions
- Unrivaled project architectural freedom
- Project structure via the plant model
- System load distribution
- Reuse of code, resulting in dramatically improved productivity
- Ease of maintenance and change propagation
- Enhanced communications and diagnostics
- Template-based, intuitive operator interfaces

InBatch software provides a comprehensive set of ActiveX Controls that can be easily integrated into InTouch HMI process graphic displays to provide operators with a very robust and friendly interface to the batch server.

Scalability - InBatch software provides a scalable architecture to meet the needs of small, simple applications such as pilot operations, all the way up to extremely large and demanding systems. The system can literally grow as the manufacturing demands increase. InBatch software offers the ability to quickly and easily add additional processing lines, manufacturing cells or operator nodes, and provides remote development capabilities in a very simple, straightforward manner. The Terminal Server Edition for InBatch clients is a very cost-effective solution for applications that require a large number of runtime clients.

High Availability - In many critical batch applications, a PC hardware failure cannot be tolerated. To avoid such failures, InBatch software facilitates the deployment of a Redundant Batch Server, which mirrors the operations of the primary server. In the event that a hardware issue should occur on the primary server, the back-up server automatically assumes the status as the primary server.

Connectivity - Wonderware System Platform and DA Servers provide unparalleled connectivity to PLC's and plant floor devices, as well external databases and systems for Wonderware InBatch software.

SYSTEM REQUIREMENTS

Qualified Operating Systems	Add'l Required Software
InBatch Server (Includes Redundancy)	
Microsoft Windows XP	Service Pack 2 or 3
Microsoft Windows 2003 Server	Release 2, Service Pack 2
Microsoft Vista	Service Pack 1
InBatch History Server	
Microsoft Windows 2003 Server	Release 2, Service Pack 2
InBatch Runtime Client	
Microsoft Windows XP	Service Pack 2 or 3
Microsoft Windows 2003 Server	Release 2, Service Pack 2
Microsoft Vista	Service Pack 1
InBatch Reporting Content	
Microsoft Windows 2003 Server	Release 2, Service Pack 2
InBatch COM Components	
Microsoft Visual Studio 2008	



Wonderware • 26561 Rancho Parkway South, Lake Forest, CA 92630 • Tel: (949) 727-3200 • Fax: (949) 727-3270
www.wonderware.com

Contact Wonderware or your local Wonderware Distributor for more information about industrial automation and information software solutions.

© 2009 Invensys Systems, Inc. All rights reserved. No part of the material protected by this copyright may be reproduced or utilized in any form or by any means, electronic or mechanical, including photocopying, recording, broadcasting, or by any information storage and retrieval system, without permission in writing from Invensys Systems, Inc.

Invensys, Wonderware, ArchestrA, QI Analyst, InTouch, HMI Reports, IntelaTrac, IndustrialSQL Server, InSQL, and FactorySuite are trademarks of Invensys plc, its subsidiaries and affiliated companies. Microsoft, Windows, Microsoft Windows, ActiveX, Visual Basic, Internet Explorer, and Excel are trademarks or registered trademarks of Microsoft Corporation. All other brands and product names may be the trademarks or service marks of their respective owners.